



**February / March 2026**

## **Hales Corners Bicentennial Quilt Rediscovered!**

Browsing through old newspapers sometimes results in delightful surprises, as we recently learned. While skimming a February 1976 issue of the Franklin-Hales Corners *Hub*, we came upon an article titled “’76 Panel Selling Squares for Quilt.” [See article below.]

WHAT Hales Corners Bicentennial quilt? We’d never heard of one, nor had any of our HCHS directors or the other Village residents we asked. The article’s statement that the quilt “will be donated to the Hales Corners Historical Society and will be on permanent display” was even more intriguing. We wondered: If HCHS does possess the quilt, where is it?

We envisioned a lengthy (and perhaps fruitless) search, but fortunately the quilt had actually been hiding in plain sight, more or less, for the past 50



*The quilt measures 80 inches by 90 inches, and features 720 two-inch signature blocks*

**'76 Panel Selling Squares for Quilt**

Only 78 squares are left in the bicentennial quilt that is being made under the auspices of the Hales Corners bicentennial heritage committee.

Individuals or families who wish to have their names a part of Hales Corners history may sign their names on a separate piece of paper and send it and \$2 for each square to Sally Dziedzic, 6221 S. 116th st., Hales Corners, 53130. Names will be embroidered as designated in the signature; for example, "Mary Jones," "Mary and John Jones," "the John Jones family."

The squares will be sewn together and then quilted. The quilt is planned to be ready for display on July 4, after which it will be donated to the Hales Corners Historical society and will be on permanent display. A key to the names on the quilt is being prepared so that anyone purchasing a square may easily find his signature.

The Hub is published semi-weekly except that only one issue appears during the weeks of Christmas, New Year's and the Fourth of July. Second class postage paid at Hales Corners, Wis. 53130. Postmaster send F3579 to P. O. Box 186, Hales Corners, Wis. 53130. Office at 9855 W. Forest Home ave. Local subscriptions: \$7 per year, \$12 for 2 years. Out-of-state subscriptions: \$12 per year. Address all correspondence to: The Hub, P. O. Box 186, Hales Corners, Wis. 53130. Business, classified and display advertising phone: 762-6400.

*Hub newspaper article, 1976*

years. Our Society’s space in the Hales Corners Library includes a storage room (sometimes referred to as “the room from hell” because it’s so crowded with artifacts, file cabinets, tall metal shelving units, etc.). And on the topmost shelf of one of those units, just below the ceiling, we discovered a bundle wrapped in a black plastic bag, secured with duct tape. The top side of the bag bore the label “Bicentennial Quilt,” but because the label faced the ceiling, no one at ground level could see it.

Although elated to have found the quilt, we wondered what condition it would be in after 50 years. Inside the dusty black bag we found a bundle that had been carefully wrapped in a heavy white cotton sheet and sealed with more duct



*(Continued on page 2)*

*(BICENTENNIAL QUILT, Continued from page 1)*

tape. We removed the sheet, and there was the quilt: 80 x 90 inches in size, and in perfect shape, with its red, white, and blue fabric and metallic gold embroidery still as vibrant as when it was sewn in 1976. We owe a huge debt of gratitude to the HCHS members of 50 years ago who had the foresight to carefully preserve this beautiful piece of Village history for future generations!

The Bicentennial quilt will be on display in the Village Hall during the entire month of July, in conjunction with July 4th festivities and the celebration of our nation's 250th anniversary.



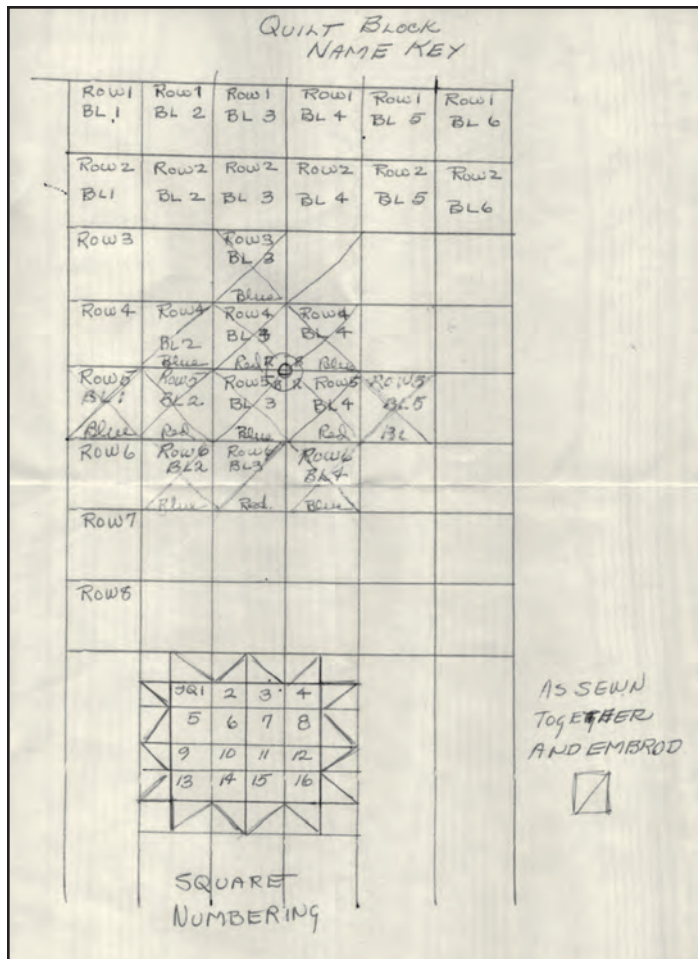
**The Bicentennial quilt was presented in June 1976 to Hales Corners Historical Society president Lee Todd by Bonnie Chadbourn and Sally Dziedzic**



**The quilt was on display at a 1976 art fair alongside the first Hales Corners Library**



**Octogenarians were honored at a dinner hosted by HCHS as part of the Bicentennial celebration.**



**Pencil layout of the quilt blocks**



## TALES OF THE CORNERS - FEBRUARY From the files of the *Tri-Town News and Hub*

### 90 YEARS AGO (1936)

- The winter of 1936 establishes all-time records. The first 14 days of February are below zero. There has been so much snow on North Cape Road that a person can stand on the snowbanks and reach the telephone wires.
- The Hales Corners fire department saves the Herman Ladwig home on Smith Road and Rawson Avenue from fire. The house is back from the road and the truck cannot get into the yard because of the deep snow. It is necessary to string 900 feet of hose from the truck to the house.
- Fifth through eighth grade students of Hales Corners School visit silent film star Colleen Moore's dollhouse at Gimbel's department store in Milwaukee.
- Ping pong sharks of the Whitnall Park CCC Camp issue a challenge to the best in Hales Corners "to come and play a few rounds."
- Jeanne Acker is elected president of the newly formed Saturday Club for the Hales Corners young set.

### 80 YEARS AGO (1946)

- W. Ben Hunt has written a new article on woodcraft for the 1946 *Encyclopedia Britannica*.
- Norbert Barth, a volunteer fireman with the Hales Corners department, falls into a 15-foot hole while fighting a fire in the Froedtert Grain and Malt company building that is under construction.
- R. W. Holz, president of Holz Motor Co., announces the adoption of an employee disability benefit plan covering hospital and surgical care, with the company paying the entire cost.
- Lt. Col. Dennis Pierce returns to his private medical practice in Hales Corners after 42 months with the Army Medical Corps.
- Ed Bosch, general manager of the Bosch Motor and Appliance Co., announces that his firm has been appointed local dealer for the DeSoto-Plymouth line of passenger cars.

### 70 YEARS AGO (1956)

- The Hales Corners Village Board appoints Elaine Marquardt as Village Clerk to succeed William Holz.
- The demand for suburban housing is converting Hales Corners from a small business community into a growing residential suburb, according to the Citizen's Governmental Research Bureau.

- Smith's Harmony Restaurant in the Hales Corners Shopping Center offers Lenten plate lunches for 85 cents to \$1.
- Five area women receive diplomas for completing the "Gas, Gasket and Glamour Auto Care" course at Holz Motors.
- Barczak Bros. advertises that "beef prices are low." The store offers beef hinds at 45 cents a pound and sides at 39 cents.
- Dr. Harold Clemence, dentist, is having an addition built to his office at 5751 S. 108th Street by William Kilps Sons. Dr. T. A. Hayes, optometrist, currently occupies part of the building. One-fourth of the new addition will house the Hales Corners exchange of the Wisconsin Telephone Co.

### 60 YEARS AGO (1966)

- Hales Corners has had only 21 auto accidents as compared to 45 for the same period in 1965. The Village has had no traffic fatality since November 17, 1961.
- Aldens opens a new catalog store in the Country Fair Shopping Center.
- Lawrence Jansky assumes his duties as principal of Whitnall Junior and Senior High School.

### 50 YEARS AGO (1976)

- Hales Corners firefighters open negotiations with the Village for higher pay. They say that personal out-of-pocket expenses, insurance rates, and risks to their lives have risen during recent years, but they have not had a pay increase since 1968. Hales Corners is the only remaining Milwaukee County community to have an all-volunteer staff of firefighters.
- The Peddler's Son restaurant advertises its Friday Land and Sea Buffet for \$3.50 per person. Included are shrimp, perch, cod, fried chicken, BBQ ribs, meat, and smoked fish.
- "In the course of human events, what do we want now?" is the first of three forums sponsored by Church Women United as part of the 1976 Bicentennial observance. It will be held at the Southwest YMCA, 11111 W. Janesville Road. The forums will develop proposals for a global society and craft a peoples' platform on issues of community concern.

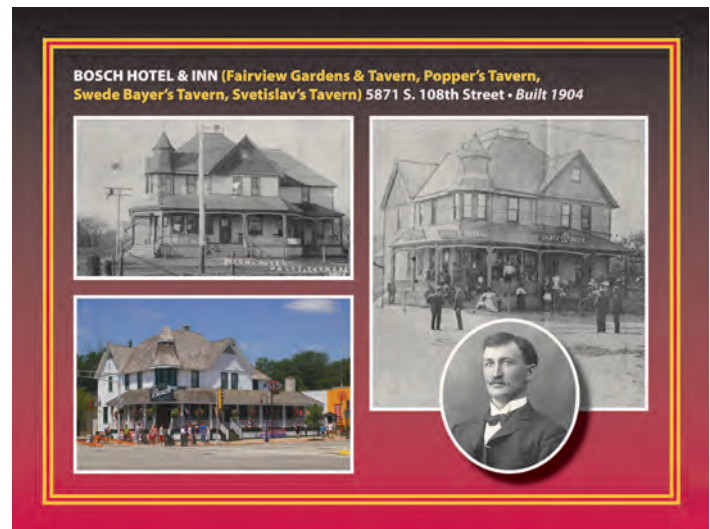
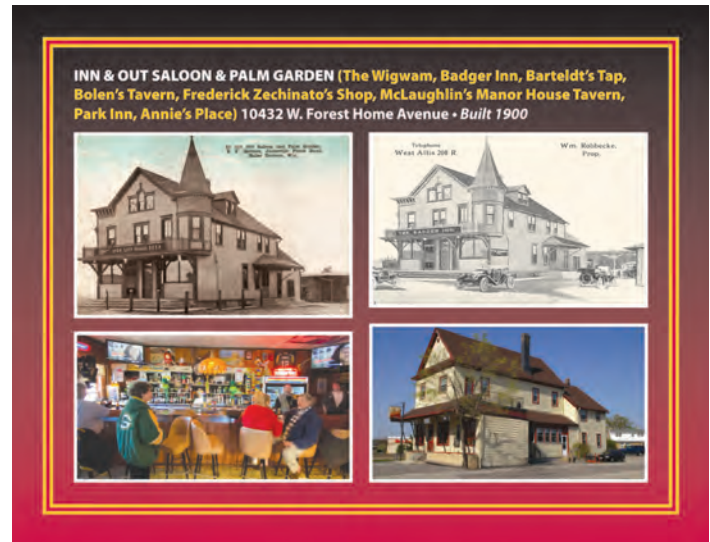
## Audience Traveled Back in Time to Hales Corners 1900-1910

On February 25th, **Al Strekow** took HCHS members and guests on a tour of Hales Corners as it existed during the very early 1900s. His presentation began with a map of the Village from 1900-1910 that pointed out most of the properties highlighted during the tour.

The major roads that serviced Hales Corners at that time were Janesville Plank Road, North Cape Road, and Conrad Avenue. All three surrounded the area known as the Triangle, which was considerably larger than it is today. Al's research resulted in a multi-faceted tour of the private residences and commercial buildings on the Triangle and on both sides of Janesville Plank Road. Three public buildings, 16 local businesses, and eight homes were featured as the tour followed the roads from the east to the southwest, from St. Mary's church and cemetery to the Seneca Hale Summer Kitchen.

The two slides at right show the Bosch Hotel & Inn and the Inn & Out Saloon & Palm Garden. Both of these properties still exist and now are known as the Bosch Tavern and Annie's Place. Not only do the buildings still survive, but they serve the same purpose as when they were built, although with multiple name changes through the years: the original Bosch Hotel & Inn was known as the Fairview Gardens & Tavern, Popper's Tavern, Swede Bayer's Tavern, and Svetislav's Tavern before being renamed the Bosch Tavern. Similarly, the Inn & Out Saloon & Palm Garden subsequently was known as The Wigwam, the Badger Inn, Barteldt's Tap, Bolen's Tavern, Frederick Zechinato's Shop, McLaughlin's Manor House Tavern, and the Park Inn before becoming Annie's Place.

Like these two examples, other slides in the program showed their building sites at that time and what exists there today. Sometimes, another building or two have replaced the originals. Many times, only an open area or parking lot is there today.



*Two slides from the HCHS program on February 25*

## Docents Are Needed at the Hunt Cabin and Museum

The Ben Hunt Cabin will reopen for the 2026 season on Saturday, May 2nd. HCHS is looking for volunteers to act as docents in the Cabin and the Hunt Museum room inside the library on an ongoing basis. Both sites require at least two individuals to welcome visitors, answer a few questions, and keep each other company during a two-hour period from 1-3 p.m. Training will be provided. If interested, please contact Randy Sannes at [rdsannes@aol.com](mailto:rdsannes@aol.com) or 414-803-9377.

## TALES OF THE CORNERS - MARCH From the files of the *Tri-Town News and Hub*

### 90 YEARS AGO (1936)

- Emanuel Evangelical Church has 13 confirmands.

### 80 YEARS AGO (1946)

- Valley View School will have only one teacher next year. The vote is 33 for two teachers and 49 against at the postponed annual meeting. Parents of school-age children vote for two teachers because the anticipated enrollment is 42 children.
- Films of the World Series and a three-reel picture from the United States Forest Service are shown for free at Hales Corners School, sponsored by the Hales Corners American Legion.
- Hales Corners students who attend Juneau High School and their parents attend an open house at the school.
- Hales Corners Girl Scouts are learning ballroom dancing.
- James Zitella operates Hales Corners Cabinet Shop.
- An electric shoe repair shop operated by C. A. Anderson opens on West Forest Home Avenue.

### 70 YEARS AGO (1956)

- Seven motorists are ticketed in Hales Corners by a radar unit from the Milwaukee County Sheriff's Department.
- State Bank Hales Corners proudly offers 2% interest on savings accounts and savings certificates.
- Trimborn's, in the Hales Corners Shopping Center, offers pork butts at 20 cents a pound, round steak at 49 cents per pound, and 50 pounds of beef for \$20.95.
- Donald Fischer, incumbent Hales Corners Village Board president, is re-elected to his second term.

### 60 YEARS AGO (1966)

- A bog garden and experimental Wisconsin prairie tract are new at Whitnall Park.
- A \$58,568 contract for lighting of highways OO and 100 from the north to south Village limits is approved by the Hales Corners Village Board.
- A valuable model airplane stolen from the Experimental Aircraft Association Air Education Museum is found when a Franklin youth who had purchased the \$300 model from another boy for \$10 realizes what he has and returns it.

- The most successful basketball season in Whitnall High School history ends with the Falcons compiling a Parkland Conference record of 13-1, a 3-1 record in non-league games, and a 2-1 record in tournament play.
- Hales Corners Jaycettes are helping the Menominee Indians of Keshena, WI and have already provided pews for a church and a station wagon full of clothing for the people.
- Whitnall High School band parents hold a luncheon meeting to kick off the campaign to raise \$6,000 to send the band to the international invitational band competition in Manitoba, Canada.
- Hales Corners Jaycettes announce plans for a charity ball for the benefit of the Cerebral Palsy Foundation.
- Donald Diven receives the Hales Corners Jaycees' distinguished service award; Tom Donahue, the outstanding Jaycee award; and Howard Graves, the good government award.

### 50 YEARS AGO (1976)

- All 29 members of the Hales Corners Volunteer Fire Department attend the annual meeting.
- The new Hales Corners Library at 5335 S. 107th Street is dedicated and opened to the public. The guest speaker is Henry F. Bates, the City of Milwaukee's head librarian.
- The Hales Corners Bicentennial Variety Show, "In the Spirit...Red, White and Wow!!" delights audiences with skits ranging from 1776 to 1976. The production includes more than 150 persons from 17 civic groups.
- Duane Sweeney moves his barber shop from 10539 W. Forest Home Avenue to 5929 S. 108th Street. The shop's former location was adjacent to the tavern his father operated for many years.
- Mastrostefano's Mia Casa restaurant opens at 11811 W. Janesville Road. Homemade ravioli is the specialty of the house.
- The theme of St. Mary Catholic Church's 11th annual Spring Luncheon is "Folk Fair," with 17 countries and historical periods represented.
- Four foreign exchange students from Brazil, Greece, Greenland, and Finland arrive in Hales Corners to spend a week living with local residents' families.
- The Hales Corners Historical Society's meeting features two performances by the Hales Corners 4-H Club: a dramatic presentation, "Our Village," depicting the history of Hales Corners from 1834 to the present, and a creative dance about railroads, "The Last Rail is Laid."

## Farm Implements Donated for the Hale Summer Kitchen

Last fall, HCHS received farm-related items from **Caroline Schachtlie**. Her late husband and former board member, **Chris**, had inherited those items from his grandfather.

Tools make up a majority of the items, but there are also a horse collar, wagon wheels, a milk can, etc. The Seneca Hale Summer Kitchen will be the perfect place to put them on display, as it was originally on Seneca's farm. Thank you, Caroline, for your donation!

It's unfortunate that HCHS does not possess any of Seneca's actual tools, but he would have been familiar with

everything in this collection. It is our hope that the Kitchen will attract increased attention as it better relates the history of early farming in Hales Corners.



**Hand pump**



**Scoop**



**Ice tongs**

### WELCOME, NEW\* AND RETURNING 2026 HCHS MEMBERS!

Melanie Acker\*  
 Constance Anderson  
 Sarah Anderson  
 Vern & Lori Archiquette\*  
 James Bain  
 Nancy Barker  
 Mary Bennett  
 Joan Berg  
 Dan & Diane Besson  
 Robert Burnham  
 & Patricia Laughlin  
 Ronald & Kathleen Dondlinger  
 David HB Drake  
 George & Diane Edward  
 Mike & JuDee Fischer  
 Robert & Mary Forecki  
 Katy Galewski  
 Jim Gilboy  
 Marsha Hammer  
 Jean Hancock  
 Jeff Hanewell & Susan Spoerk

Paul Hapka  
 David & Margarete Harvey  
 Duane & Sharon Hause  
 Michael Holmes  
 Frank & Judith Humpal  
 Mary Javorek  
 Mike Jedrzejewski  
 & Sybil Grandeck  
 Gregory Jenks  
 Celine Kashishian  
 James & Jacqueline Keuck  
 Kathy Kilps\*  
 Dottie King  
 Scott & Judy Kruger  
 Romaine Krystowiak  
 Bob Lehman  
 Mary Long  
 Gary Kohls & Karen Niessing  
 Mike Praedel  
 Scott & Maureen Riemer  
 Mary Ellen Robertson

Richard & Carol Ann Rose  
 Randy Sannes  
 Mel & Kathleen Sass\*  
 Caroline Schachtlie  
 Elaine Schmidt  
 Don & Suzanne Schwartz  
 Nancy Sievert  
 Michael Simmons  
 Marjorie Stahl  
 Daniel & Kayellyn Strasburg  
 Al & Ruth Strekow  
 Linda Teschendorf  
 Dan & Mary Thomson\*  
 Robb & Kathleen Thoren  
 Brian & Laura Touhey  
 Patricia Warchol  
 Robert & Jeanette Wardinski  
 Michael Wittig\*  
 Kathleen Zellmer

*Membership roster  
 current as of March 2026.*



### HALES CORNERS HISTORICAL SOCIETY

5885 South 116th Street, Hales Corners, WI 53130  
 • 414-529-6150, Ext. 24 • info@HalesCornersHistory.com  
 • www.HalesCornersHistory.com  
 • www.facebook.com/HalesCornersHistory

**Editorial:** Al Strekow, Ruth Strekow  
**Research:** Katy Galewski  
**Design:** Al Strekow