



THE MAIN STREETS OF HALES CORNERS IN 1910

Welcome to another Special Edition newsletter. On pages 4-8, you will get a glimpse of Hales Corners more than 100 years ago. HCHS board member **Mike Fischer** discovered a map of the area from 1910 that focused on the Janesville Plank Road, which became today's Forest Home Avenue and Janesville Road. The map featured all the

properties (in yellow) that existed at that time. With quite a bit of cross-referencing between other maps and lists of addresses, we were able to identify most of the buildings. To make your trip back in time more complete, we have added photos of 18 buildings taken during that period. Only two buildings still remain: the Bosch Tavern and Annie's Place.

Happy New Year from HCHS!

An annual ritual for many of us is removing last year's marked-up calendar from the wall or desk and substituting a fresh, clean replacement, which clearly identifies the first day of the new year as **January 1**. But at one time, not everyone agreed on that date. Here is a bit of history on that topic, courtesy of the Colonial Williamsburg Foundation:

Calendars date back thousands of years, with the first ones based on the seasons. The designation of January 1 as the start of the year began during the Roman Empire. When Julius Caesar introduced what is known as the Julian calendar based on the movement of the sun (rather than the moon), this practice continued. However, countries eventually began marking the new year on different days. By the Middle Ages, the date in much of Europe reverted to **March 25**



to coincide with the Feast of the Annunciation.

In 1582, Pope Gregory XIII introduced the Gregorian calendar, which corrected errors in Julian calendar calculations of equinoxes and leap

years and returned New Year's to January 1. Most of Europe adopted this new calendar, but Protestant England rejected the change and did not adopt the Gregorian calendar until 1752.

Between 1582 and 1752, both calendars were used throughout Europe and its colonies, although holdout England continued to designate March 25 as the start of the "legal" year. This resulted in a system of double dating for the dates of January 1 to March 25. Those "Old Style" and "New Style" dates use a slash or a hyphen between the years—for example February 1, 1640/41. Historians regularly find such examples when examining records from those years.

The English Parliament's Calendar (New Style) Act 1750 codified implementation of the Gregorian calendar, making

(Continued on page 2)

(New Year, continued from page 1)

January 1 the official start of the year. To account for the discrepancy that had evolved between the Julian and Gregorian calendars, the law also called for 11 days to be dropped from the month of September 1752.

Williamsburg learned of this shift in 1751 from articles in the *Virginia Gazette*. As you might imagine, the change caused confusion throughout the colonies. Payments, contracts, leases,

birth dates, taxes, and even laws were impacted. Although financial transactions were supposed to run their full terms, wages were mistakenly (and sometimes deliberately) withheld.

Although a small number of colonies initially resisted adoption of the Gregorian calendar, Benjamin Franklin embraced the conversion, writing, "It is pleasant for an old man to be able to go to bed on September 2, and not have to get up until September 14."

Memories of Winter in the Village

Shown here are items from our collection that feature winter sports with sledders, hockey players, and very strange skiers. The first two items are passes issued by the Milwaukee Electric Railway & Transport Company in 1940. How far you could ride and what you could ride on was determined by how much you paid:

- **The \$1.00 Weekly Pass** limited riders to travel within a single fare area. It was not good on Green City buses or Rapid Transit cars.
- **For \$1.25**, riders could travel on City buses of the Wisconsin Motor Bus Lines and local Rapid Transit Cars to 92nd Street. This travel was limited to the first two suburban zones outside the single fare area of Milwaukee.

- **For \$1.50**, riders could travel on City buses and ride the Rapid Transit as far as Hales Corners and Sunny Slope. The travel was also extended to the first four suburban zones.

Just like today, you got what you paid for!

The final item is an ad for Paradise Skelly Service. All that we know about this business is its location on Highway 100 and Grange. Can anyone provide more information?



WINTER WINNERS!
Every One
Is A
CHAMPION PERFORMER

Your friendly Skellyman carries a complete line of **SKELLY ACCESSORIES** that are guaranteed to give maximum, dependable service throughout the long winter.

See him for tires, batteries, spark plugs, oil filters, fan belts, radiator base or for any other accessory need.

QUALITY HAS NO SUBSTITUTE

Paradise Skelly Service
Automobiles Repaired, Washed, Polished, Lubricated
HIGHWAY 100 at GRANGE Hales Corners 5-1232 HALES CORNERS, WIS.

The Hales Corners Historical Society Is 50 Years Old!

In 1974, HCHS was registered in Wisconsin, and the first official meeting took place in 1975. During the first year, the Society began taping oral history interviews, identifying historic buildings and providing them with signs, and developing a walking tour of the Village. A logo contest was also held and won by Ron Kinart. His logo featured the oldest building in Hales Corners, the Seneca Hale Summer Kitchen. We have modified his logo slightly in commemoration of our 50th anniversary



TALES OF THE CORNERS - JANUARY

From the files of the *Tri-Town News* and *Hub*

90 YEARS AGO (1934)

- Projects in and around Hales Corners School are being assigned to the Civil Works Administration. Two additional teachers will be hired through the program.
- The Civil Works Program is cited as the greatest benefit to war veterans and the entire country at a meeting of the Freede-Eckel American Legion in the Hales Corners School Hall.
- The Hales Corners Volunteer Fire Department announces that it answered 14 calls in 1933.
- The Hales Corners Building and Loan Association shows a gain of \$10,826 in 1933, up \$1,285 from 1932's gain. The biggest gain since the association began in 1927 was \$66,000 in 1930.
- Emanuel Evangelical Church cancels all delinquent dues. There will no longer be yearly dues. Instead, members will be asked to contribute what they feel they can afford.
- Myrtle Anderson is elected president of the Ladies Aid Society at Emanuel Evangelical Church.

80 YEARS AGO (1944)

- Albert Meares is elected president at the annual meeting of the Hales Corners Volunteer Fire Department. Fire Chief August Giese is re-elected and reports 62 fire runs in 1943 with a total property loss of \$36,600.
- The Co-op Food Store, Hales Corners, advertises two pounds of peanut butter for 67 cents, two pounds of spaghetti for 19 cents, and coffee for 35 cents per pound.
- About 50 people meet at Hales Corners School to discuss the cooperative movement. Following the serious part of the evening, Wilbur Leatherman leads the group in folk and square dancing.
- Mrs. Fred Marquardt is elected president of the Whitnall Park Garden Club.

70 YEARS AGO (1954)

- Ritzman Appliance celebrates its Grand Opening in Hales Corners. Crosley and Bendix appliances are advertised for the event.
- Village President Walter Fehr, Trustee W. Ben Hunt, and Clerk William Holz announce that they will not seek re-election.
- Hales Corners Building Inspector A. J. Cridelish reports he issued 54 permits for building and remodeling in 1953. That is down three permits from 1952. Construction was valued at \$433,800.
- Negotiations for Village space in the building formerly owned by the State Bank Hales Corners are approved.
- Plans are announced to erect a new service station on the southeast corner of Janesville Road and Highway 100.

60 YEARS AGO (1964)

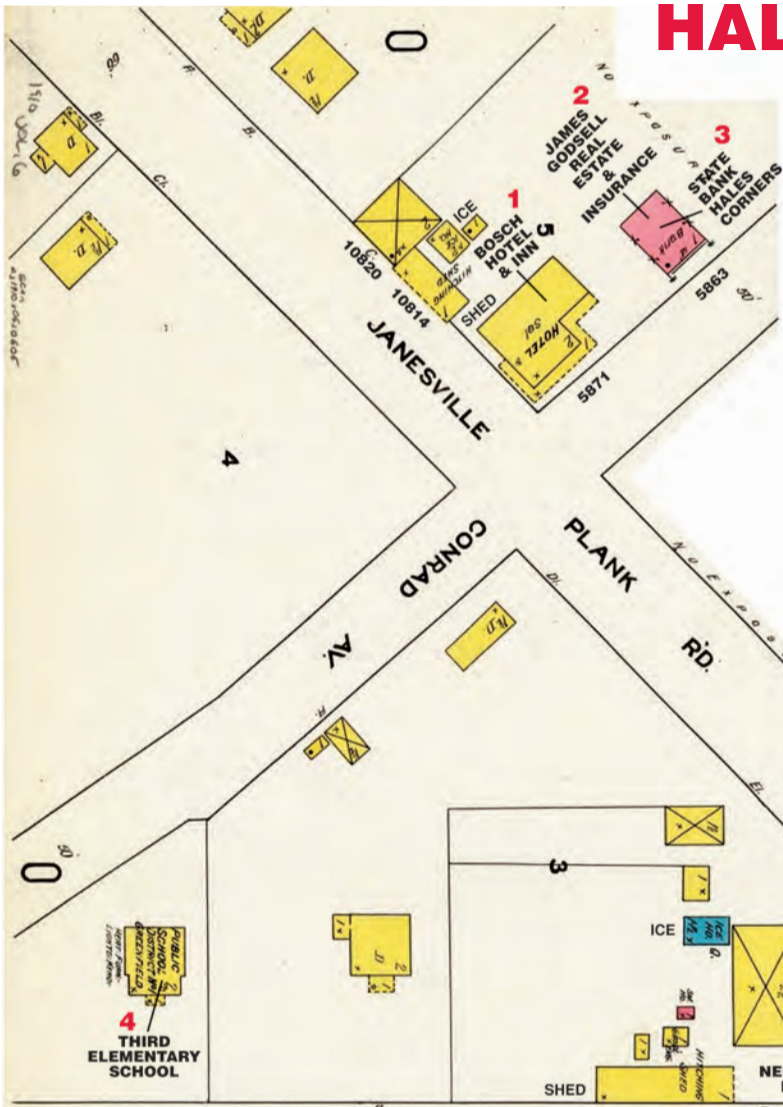
- The third and final Victory Over Polio Clinic of the current series is slated to be held at Hales Corners School. The clinics are sponsored by the Hales Corners Junior Chamber of Commerce.
- August Giese retires after serving as chief of the Hales Corners Volunteer Fire Department for 36 years. Assistant Chief Arthur Ircink is promoted to chief.
- Dial Veteran Cab Co., Oak Creek, is granted a permit to operate in Hales Corners by the Village Board.

50 YEARS AGO (1974)

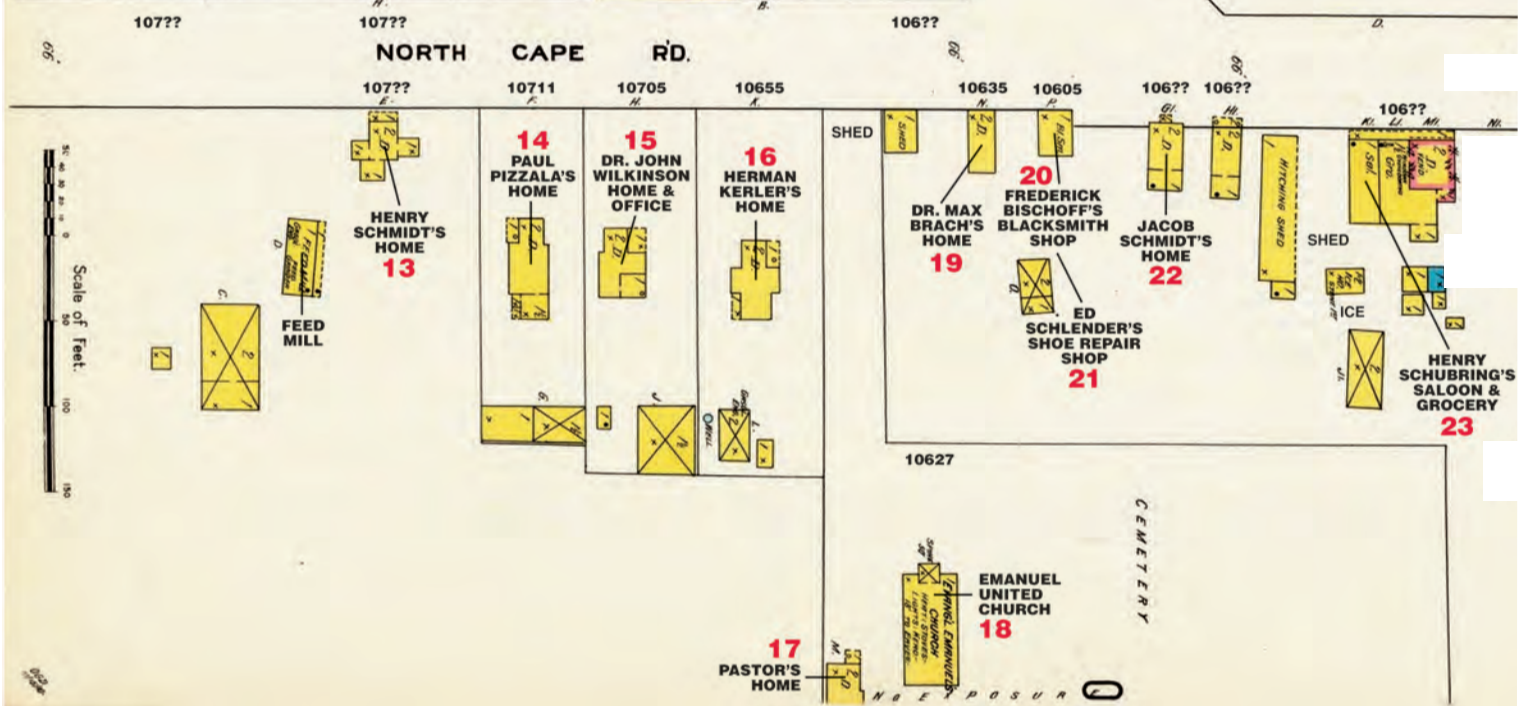
- The Hales Corners Community Theater announces auditions for *Forty Carats*.
- Signatures of 100 Whitnall School District residents are obtained in order to put a referendum on April's ballot. Electors will be asked to expand the Whitnall School Board from five to seven members.

Research by Katy Galewski

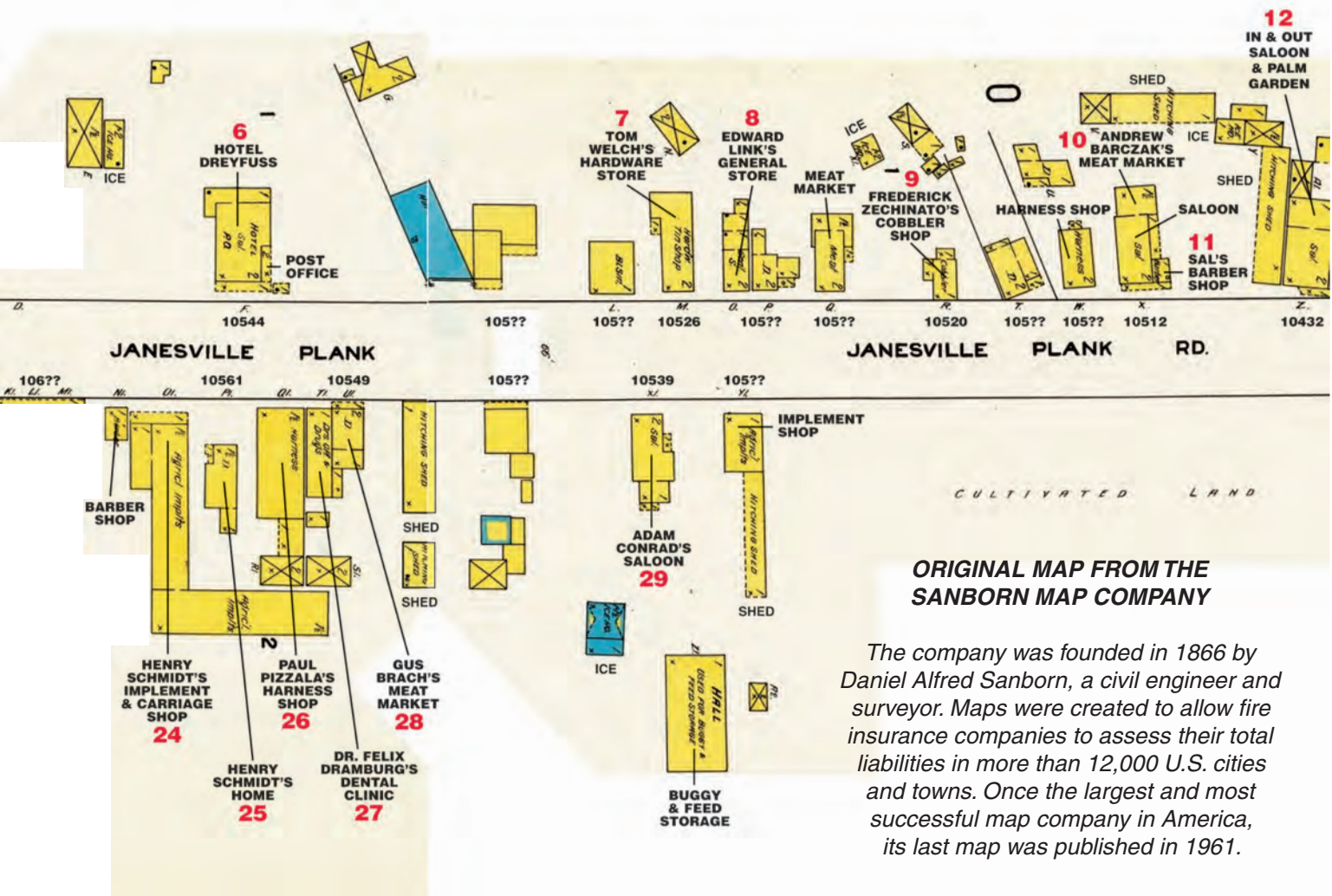
HALES CORNERS 1910



- 1) **BOSCH HOTEL & INN (1904-1926)**
Fairview Gardens Tavern (1920s), Swede Bayer's Tavern (1940-1995), Bosch Tavern (1995-Today)
- 2) **JAMES GODSELL REAL ESTATE & INSURANCE (1910-?)**
- 3) **STATE BANK HALES CORNERS (1910-1953)**
Hales Corners Flooring (1985-2015)
- 4) **THIRD ELEMENTARY SCHOOL (1900-1916)**
- 5) **NEUSSEL HOTEL (1899-1915)**
John Schubring's Triangle Inn (1915-1940), Harold Senft's Triangle Inn (1940-1961)
- 6) **HOTEL DREYFUSS (1910-1953)**
Hunters & Trappers Home (1834-1848), Western Hotel (1848-1910)
- 7) **TOM WELCH'S HARDWARE STORE (1909-1937)**
Tom Welch Jr.'s Hardware Store (1937-?)
- 8) **EDWARD LINK'S GROCERY STORE (1910-?)**
- 9) **FREDERICK ZECHINATO'S COBBLER SHOP (1873-?)**
- 10) **ANDREW BARCZAK'S MEAT MARKET (1909-1917)**



- 11) **SAL'S BARBER SHOP (1910-?)**
- 12) **IN & OUT SALOON & PALM GARDEN (1910-?)**
Wigwam (1900-?), Badger Inn (1920s), Barteldt's Tap (?), McLaughlin's Manor House Tavern (?), Park Inn (?), Annie's Place (1988-Today)
- 13) **HENRY SCHMIDT'S HOME (1910-?)**
- 14) **PAUL PIZZALA'S HOME (1910-?)**
- 15) **DR. JOHN WILKINSON'S HOME & OFFICE (1902-1927)**
Dr. Robert G. Sayle's Office (1885-1896), Dr. Bernard McShane's Office (1896-1902)
- 16) **HERMAN KERLER'S HOME (1904-?)**
- 17) **PASTOR'S HOME (1900-?)**
- 18) **EMANUEL UNITED CHURCH (1888-1962)**
Current Church (1962-Today)
- 19) **DR. MAX BRACH'S HOME (1910-1920)**
Brach's Animal Hospital (1911-1920), Hales Corners Autos (?), Hales Corners Post Office (?)
- 20) **FREDERICK BISCHOFF'S BLACKSMITH SHOP (1910-1914)**
Frederick Ruehle's Blacksmith Shop (1855-?), August Ruehle's Blacksmith Shop (?-1894), J. Burns & J. Pier's Blacksmith Shop (1894-1910)
- 21) **ED SCHLENDER'S SHOE REPAIR SHOP (1910-?)**
- 22) **JACOB SCHMIDT'S HOME (1910-?)**
- 23) **HENRY SCHUBRING'S SALOON & GROCERY STORE (1903-?)**
Jacob Siegel's Dry Goods & Groceries (1854-1890), John Schubring's Grocery & Tavern (1890-1903)
- 24) **HENRY SCHMIDT'S IMPLEMENT & CARRIAGE SHOP (1900-1922)**
Schubring & Witt Ford Agency (1922-1926), John Ludwig's Implement Shop (1926-?)
- 25) **HENRY SCHMIDT'S HOME (1900-?)**
- 26) **PAUL PIZZALA'S HARNESS SHOP (1910-?)**
Doyné's Delicatessen (?), Hales Corners Liquor & Beer (1933-Today)
- 27) **DR. FELIX DRAMBURG'S DENTAL CLINIC (1900-1923)**
- 28) **GUS BRACH'S MEAT MARKET (1910-?)**
- 29) **ADAM CONRAD'S SALOON (1908-?)**
Ackerman's Tavern (?), Brogan's Tavern (?), Dipadova's Silver Dollar Bar (?), Erdman's Tavern (?), Gehrman's Meat Market (?), J. Jungbluth's Grocery Store (?), Jordan's Tavern (?), Lampe's Inn (?), Tischler's Tavern (?), Ed Sweeney's Silver Dollar Bar #1 (1946-1963) and #2 (1963-1980), China Inn Restaurant (1980-2014), Hale House Restaurant (2015-Today)





- 1) BOSCH HOTEL & INN (1904-1926)
- 2) JAMES GODSELL REAL ESTATE & INSURANCE (1910-?)
- 3) STATE BANK HALES CORNERS (1910-1953)
- 4) THIRD ELEMENTARY SCHOOL (1900-1916)
- 5) NEUSSEL HOTEL (1899-1915)
- 6) HOTEL DREYFUSS (1910-1953)
- 7) TOM WELCH'S HARDWARE STORE (1909-1937)



- 8) EDWARD LINK'S GROCERY STORE (1910-?)
- 12) IN & OUT SALOON & PALM GARDEN (1910-?)
- 16) HERMAN KERLER'S HOME (1904-?)
- 17) PASTOR'S HOME (1900-?)
- 18) EMANUEL UNITED CHURCH (1888-1962)
- 19) DR. MAX BRACH'S HOME (1910-1920)



20



26 & 27



23



28



24



29

- 20) FREDERICK BISCHOFF'S BLACKSMITH SHOP (1910-1914)
 23) HENRY SCHUBRING'S SALOON & GROCERY STORE (1903-?)
 24) HENRY SCHMIDT'S IMPLEMENT & CARRIAGE SHOP (1900-1922)

- 26) PAUL PIZZALA'S HARNESS SHOP (1910-?)
 27) DR. FELIX DRAMBURG'S DENTAL CLINIC (1900-1923)
 28) GUS BRACH'S MEAT MARKET (1910-?)
 29) ADAM CONRAD'S SALOON (1908-?)

HALES CORNERS HISTORICAL SOCIETY

5885 South 116th Street, Hales Corners, WI 53130 • 414-529-6150, Ext. 24
info@HalesCornersHistory.com • www.HalesCornersHistory.com • www.facebook.com/HalesCornersHistory