



**December 2020**

## **HAPPY HOLIDAYS ARRIVE AT THE LIBRARY!**

Our annual Christmas window display was installed at the Hales Corners Library on December 1st and will remain up until January 5th.

The theme of this year's window is Christmas ornaments and decorations around the family Christmas tree. Many thanks to our members who rummaged through their attics to unearth these treasures, some of which date to the 1920s.

A special thank you to **Mary Javorek** and **Katy Galewski** for their artistry in assembling the items into the festive window you see here. They managed to include three trees, an ornament-trimmed wreath, three vintage train sets, and photos of Christmas trees of past eras.



### **Repairs planned for 2021:**

## **KEEPING THE HUNT CABIN HIGH AND DRY**

You may not realize it, but the Ben Hunt Cabin is 97 years old. We all know that age takes its toll on us, and it's no different with our cabin. We have found a serious problem with a bottom log that runs along the entire north side of the cabin and beneath the side door. The log is approximately 30% rotted, but fortunately can still be patched. While it does not pose an immediate threat to the stability of the north wall, it's prudent to address the issue now and avoid any further foundation issues.

We contacted four contractors to determine the best course of action. Two of them believe the best solution is to uncover the log and regrade the surrounding soil, so the log will always be exposed to the air. That will dry out any future moisture.

The project is costly at \$8,650. That's a lot of money, especially with no income from programs

and fundraisers this past year due to COVID-19. But, it will be even more expensive if we wait. Work will start in spring 2021. HCHS is determined to keep our Cabin healthy so we can all celebrate its 100th birthday in 2024!

### **SUMMARY OF THE PROJECT:**

- 1) Remove the lannon stone steppers, and the brick walkway from the side door to the main sidewalk that runs in front of the cabin.
- 2) Dig out and uncover the problem log.
- 3) Regrade the entire area on the north side, pitching it from below the log at a proper angle for drainage.
- 4) Install a stone-filled trench along the north side of the cabin and install a drainage pipe connected to two gutter downspouts.
- 5) Reinstall the brick walkway.
- 6) Build and install new steps for back door.
- 7) Use lannon stone to create a walkway to the shed door.
- 8) Install a new window well on the east side of cabin and regrade away from the foundation. This will minimize water which is getting into the crawlspace.

# CHRISTMAS CAME EARLY AT HCHS

During the past three months, HCHS has received the following donations to our collection.



**Dorothea Lannin** of Greenfield donated two professional-quality, five-panel displays that fold to fit hard-sided travel cases on wheels. The panels are covered on opposite sides with blue and gray fabric, and measure 4" high by 10.5" wide when fully extended.

The display panels feature multiple photos and images from the Whitnall High School class of 1969. Those images will be removed and



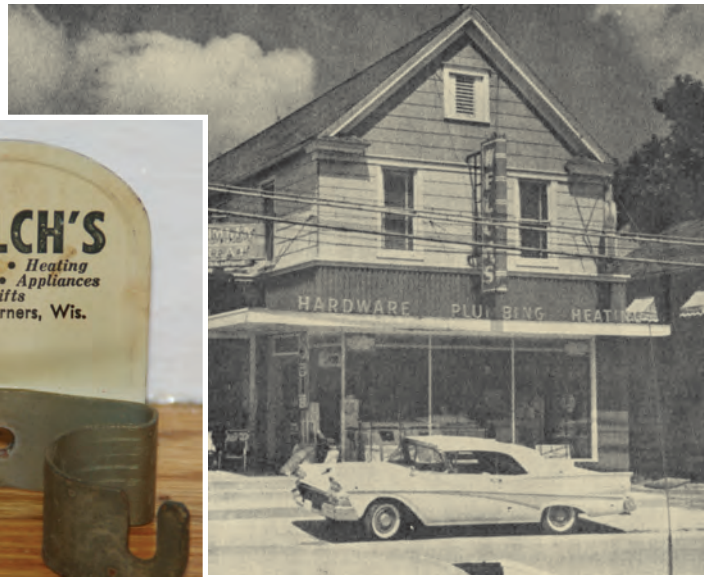
cataloged in our collection and the display panels themselves will be used during future HCHS programs. Thank you, Dorothea!

HCHS members **Mel & Elaine Schmidt** donated two items for our collection. The first is a framed watercolor (below) of an 1800s vintage carriage in a fall setting. The painting was created in two dimensions by local artist Will Grams, a charter member of the Allis-Chalmers Sketch Club. It measures 16" high by 18.5" wide.

The second item is a zippered money pouch from State Bank Hales Corners. Mel used the pouch when making deposits from his liquor store, which was located in the Hales Corners Shopping Center from 1954 to 1968. Thanks, Mel and Elaine, for your donations!







**Steven Muhich** of Franklin donated the metal broom holder (center photo), which he came across at a rummage sale. Besides being functional, it's also a clever advertising piece for Welch's Hardware Store, which was located at two different locations in the Village, both on Forest Home Ave. The

photo at left is from 1909 and the one at right is from 1959.

Steve also discovered the tin canister (at right) that once held 30 pounds of pure honey. It measures 10.5" high by 10" in diameter. According to the label, it was the property of John Kneser, R.F.D. Hales Corners, WI. Thanks, Steve!



## Merry Christmas 90 Years Ago from the *Tri-Town News*



While organizing files recently, we came across the interesting seasonal publication at left. In 1930 and 1931, the *Tri-Town News* published monthly newsletters entitled *Halestones*. This is the second issue, from December 1930. It is one of five issues in the HCHS collection.

*Halestones* was printed specifically for the school children in this area, and featured articles and poems written by the schoolteachers and their students. There was no advertising, but local sponsors were acknowledged on certain pages. The final issue was published in June 1931.

Can you guess who this Milwaukee personality is?



Answer in the next issue.

## Hundreds of images added to our digital collection

Even though COVID-19 has put most HCHS projects on hold for this year, we still have been busy adding 665 more digital images to our historical collection. They include **David O'Brien's** personal photos, new scans of the items from the recently donated **Dreyfuss Collection**, and about 150 or so miscellaneous photos that were donated or scanned from our newspaper files. That brings the total number of images in our collection to 4,743.

---

## Moment in Time photo project for 2020 has been completed



Since 2000, HCHS volunteers have photographed every property in Hales Corners at 10-year intervals corresponding with the National Census. This year, we decided to focus only on business and public properties, as homes do not change all that much over a 10-year period. Even with that limitation, over 450 photos were taken, which is additional to the photos mentioned in the article above.

It's interesting to note that the number of business properties changed a lot; more than 50 moved in and out of Hales Corners since 2010. Many thanks to our volunteer committee: **Mary Bennett, Chris and Caroline Schachtlie, and Don Schwartz.**

## TALES OF THE CORNERS

From the files of the  
*Tri-Town News and Hub.*

### 90 YEARS AGO (1930)

- Despite the "so called depression," 15 new homes are either completed or under construction in the Hales Corners area.
- Members of the Hales Corners Advancement Association discuss purchasing street signs for the Village.
- Ash and garbage collection begins in Hales Corners for \$1.00 per month.
- Students at the Hales Corners School present an Armistice Day program.

### 80 YEARS AGO (1940)

- In the presidential election, Hales Corners voters favor Republican Wendell Willkie (427 votes) to Democrat Franklin D. Roosevelt (315 votes).
- Soldiers travelling by truck from Fort Sheridan to Camp McCoy stop to warm up at the Whitnall Park CCC Camp.

### 70 YEARS AGO (1950)

- Directors of the Speedrail interurban line announce that the company has authorized its president to petition the Public Service Commission for permission to abandon passenger service on the line.
- Walter Fehr is appointed head of a committee to study incorporating Hales Corners. A meeting held at the school draws 100 interested residents.
- Students at Hales Corners School have a court to handle pupils who disobey school rules. Punishment for violators is a minimum of one hour of work to be done during recess periods.

### 50 YEARS AGO (1970)

- Hales Corners voters favor Republican Jack Olsen for governor over Democrat Patrick Lucey.
- The proposed Hales Corners Village budget totals \$1,171,530.
- The state grants Hales Corners \$26,000 for sanitary sewer installation in Hale Park. That should cover 25 percent of the project's total cost.

*Research by Katy Galewski*

## HALES CORNERS HISTORICAL SOCIETY

5885 South 116th Street, Hales Corners, WI 53130 • 414-529-6150, Ext. 24

[info@HalesCornersHistory.com](mailto:info@HalesCornersHistory.com) • [www.HalesCornersHistory.com](http://www.HalesCornersHistory.com) • [www.facebook.com/HalesCornersHistory](https://www.facebook.com/HalesCornersHistory)